

Figure 1 shows DNA coverage of species assemblies to D.melanogaster genome, size of species assembly and counts of inverted segments. Coverage for earlier assemblies(asm1) along with latest assemblies are shown. Note that Dgri asm1 is better by this measure than asm2. Dmel asm1 size includes heterochromatin; only euchromatin was used for DNA matches.

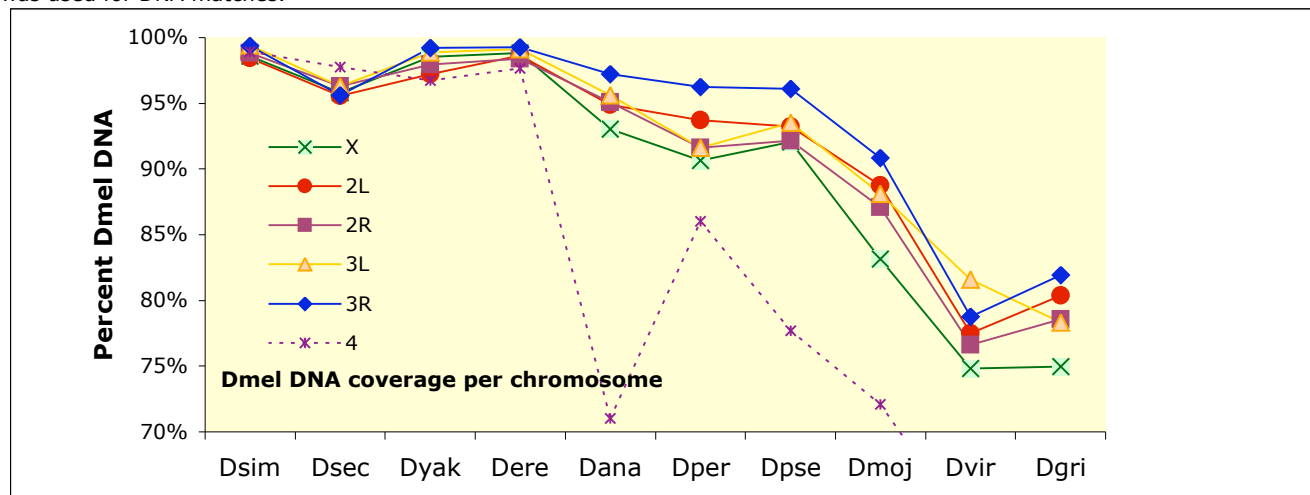


Figure 2 shows DNA coverage as percent of D.mel. chromosomes.

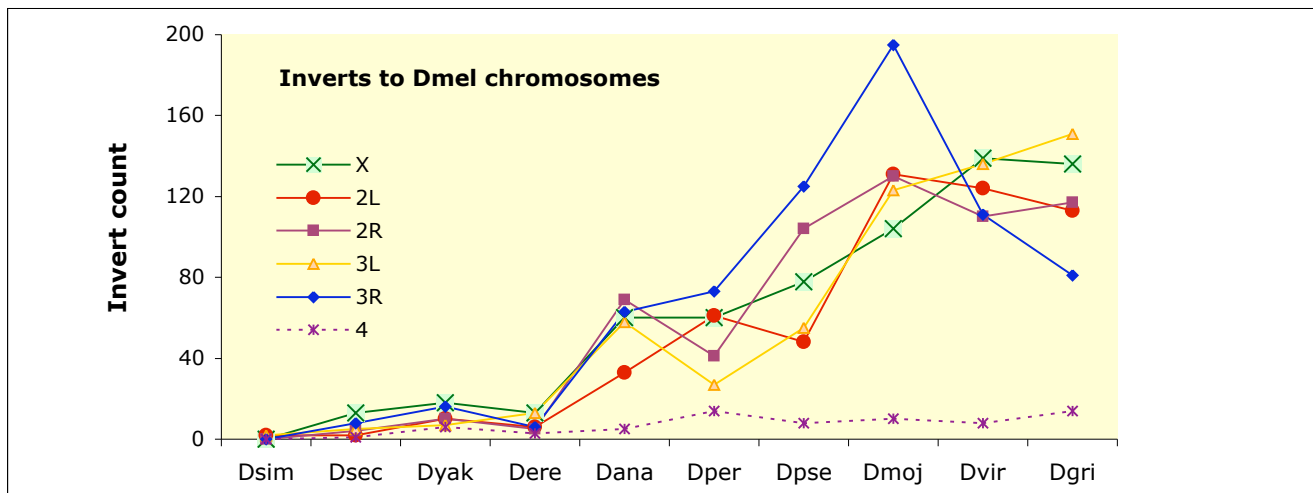


Figure 3 shows inverts to the D.mel. chromosomes. Inverts are counted as changes in strand within each scaffold, so are affected by completeness of assembly as well as genomic inversions. Matches are made with BLASTn of genome assembly DNA to Dmel genome.