

Figure 1 shows unique model organism gene matches in a single Drosophila species.

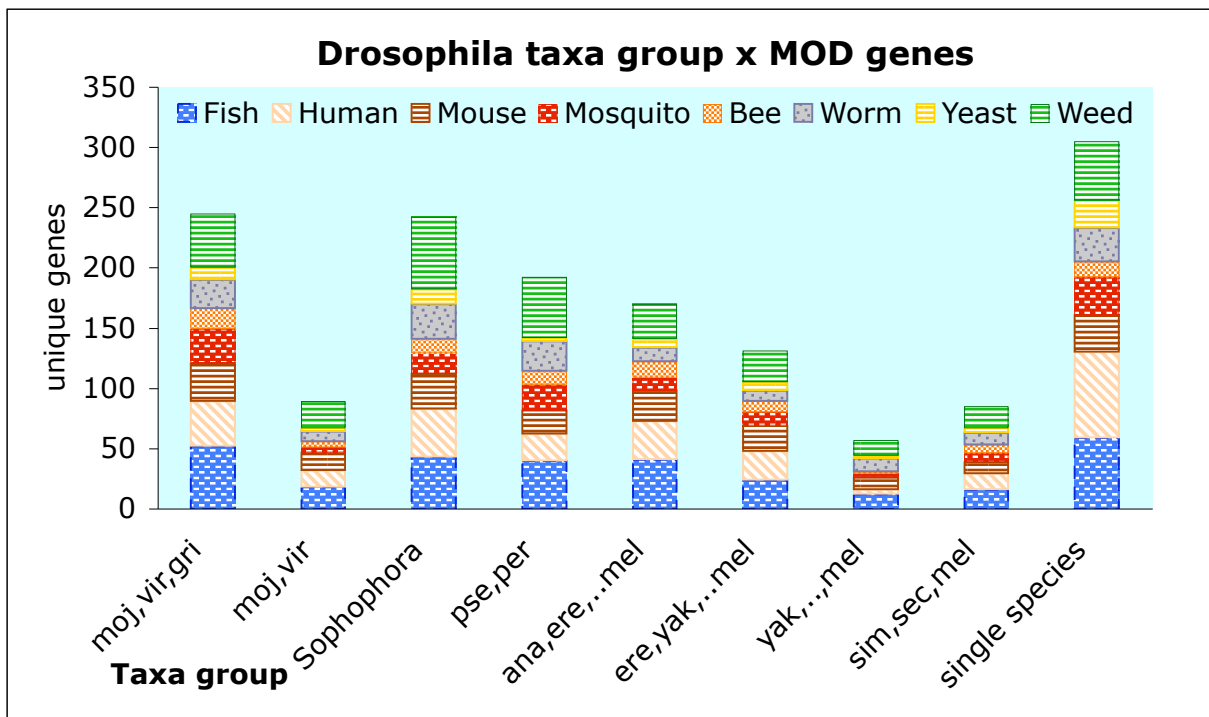


Figure 2 shows unique MOD gene matches for a given taxonomic grouping. About 90% of MOD genes that are found in any Drosophila are matched in all Drosophila, about 9% match in some subset, and about 1% match in a single Drosophila species.

Notes: The Dsim assembly used here is dgpg-2004 (syntenic) as the 2005 wu-mosaic has some yeast genome contamination with a spurious yeast gene count. The Dyak assembly used here has removed yeast genome contamination.